

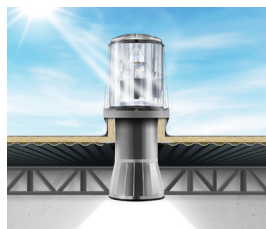


## Product Guide

Tubular Daylighting Technologies  
for Commercial Spaces



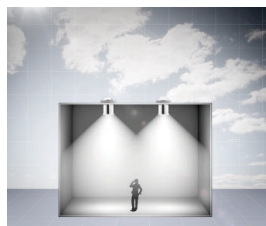
# Create inspiring spaces with tubular daylighting.



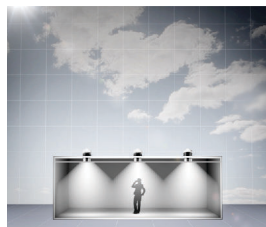
**Technology & Engineering** p 4-7  
Explore the performance and innovations



**SkyVault® Series** p 8-13  
Large Tubes for Large Spaces



**SolaMaster® Series** p 14-19  
Medium Spaces, Maximum Versatility



**Brighten Up® Series** p 20-25  
Big Impact for Small Areas



**Professional Services** p 26-27  
Our full-service support offerings

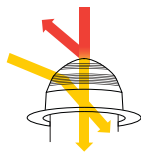


# Discover the technology that changed daylighting.

At Solatube International, we intentionally design our daylighting systems using passive optical technology in order to significantly reduce system costs and maintenance. We've also spent the last 30 years perfecting this technology to ensure our Solatube Daylighting Systems perform better than other tubular daylighting devices on the market.



## CAPTURE



### Raybender® Technology (Select Models)

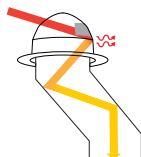
A patented daylight-capturing dome lens that redirects low-angle sunlight, rejects overpowering summer sunlight and provides consistent daylighting through the year.



### LightTracker™ Reflector (Select Models)

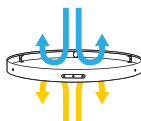
An innovative in-dome reflector that redirects low-angle winter sunlight, increases light input for greater light output and delivers unsurpassed year-round performance.

## THERMAL CONTROL



### INFRAREDUCTION™ Technology

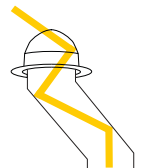
A technology integrated into Spectralight® Infinity tubing that uses a proprietary process to filter out infrared wavelengths and minimize solar heat gain.



### Thermal Insulation Panel (Optional)

Provides unmatched thermal performance. Two climate controlled discs and a thermal break prevent conductive and convective heat transfer.

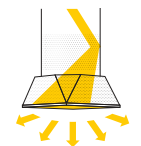
## TRANSFER



### Spectralight® Infinity

Tubing made of the world's most reflective material offers the highest Specular Reflectivity up to 99.7% and provides the purest color rendition possible for truer, brighter colors. Long tube runs are possible, including multistory and 90° turns with minimal light loss.

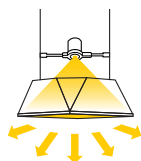
## DELIVER



### Optical Lenses

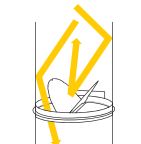
DaylightShaping™ Lens Technology allows for direct light distribution for different visual effects and provides superior visual comfort.

## OTHER OPTIONAL ACCESSORIES



### Integrated LED Light Kit

Allows integration of traditional light for a cleaner ceiling appearance and nighttime illumination from a single fixture.



### Daylight Dimmer™

Adjusts daylight levels at the touch of a button.

# Engineered for peace of mind.

When you choose Solatube Tubular Daylighting Systems, you are choosing quality that’s been tested over time. Every material and component is specifically selected and designed for maximum performance, ease of installation and protection from the elements. We offer a 10 year warranty on most of our components.



### Leak Proof Design

Solatube Tubular Daylighting Systems use one-piece seamless flashings and curb mounted caps that can be fit to any roof shape and slope, and the materials are designed to stand up to the harshest elements, year after year. Tubular daylighting roof penetrations are smaller than those for large traditional skylights. The circular design allows rain and debris to bypass the rooftop dome, so it’s leak-proof and virtually maintenance-free. Additionally, the Solatube dome and flashing assemblies are designed to provide a protected “dry edge” for all openings into the building envelope.



### No Glare

Solatube Tubular Daylighting Systems are designed to minimize glare. during peak daylight hours. Our Raybender 3000® dome technology controls overpowering midday sunlight, letting in only those that are comfortable on the eyes. This provides consistent daylight from morning through early evening. Additionally, Solatube’s unique optical diffuser lenses precisely shape light output, placing light where it is needed and desired for a visually balanced environment.



### Energy Efficiency

Solatube deployments substantially reduce the energy used for interior lighting during daylight hours. A Solatube Installation reduces electrical energy usage and greenhouse gas emissions created during electricity generation. Due to the excellent thermal efficiency of a Solatube daylight system, minimal heat is lost during the winter, reducing the need for heating. On hot days, minimum heat enters the building, reducing the need for cooling.



### Thermal Performance

Solatube Tubular Daylighting Systems provide unmatched thermal performance. Our InfraReduction Technology, which is integrated into our Spectralight Infinity tubing, uses a proprietary process to filter out infrared wavelengths and minimizes solar heat gain. Thermal breaks designed between the flashing and tubing ensure heat is not conducted from the roof to the interior. Thermal insulation panels and curb/flashing insulation options are also available for most models.



### No Harmful UV

Our optical domes prevent virtually all UV wavelengths from entering the TDD system. This is important because UV light can have a negative impact on building materials it contacts—like carpet, clothing, furniture, and artwork.



### Ease of Installation

Solatube Tubular Daylighting Systems feature factory-assembled parts for faster, easier, more professional-looking installations. Our modular systems feature angle adaptors for tube-run flexibility, snap-in diffusers, and extension tube tabs with notches on top and bottom tubes.



### Ease of Maintenance

Solatube Tubular Daylighting Systems feature passive daylighting technology that does not rely on moving parts, making it virtually maintenance-free. Seals prevent bug and dirt filtration. In addition, the dome and flashing are designed to eliminate debris build-up. Unlike traditional skylights, which need periodic cleaning and inspection, the Solatube Tubular Daylighting System does not require ongoing maintenance.

# SkyVault Series

Industrial • Sports Facilities • Airports • Convention Centers • Big Box Retail • Grow



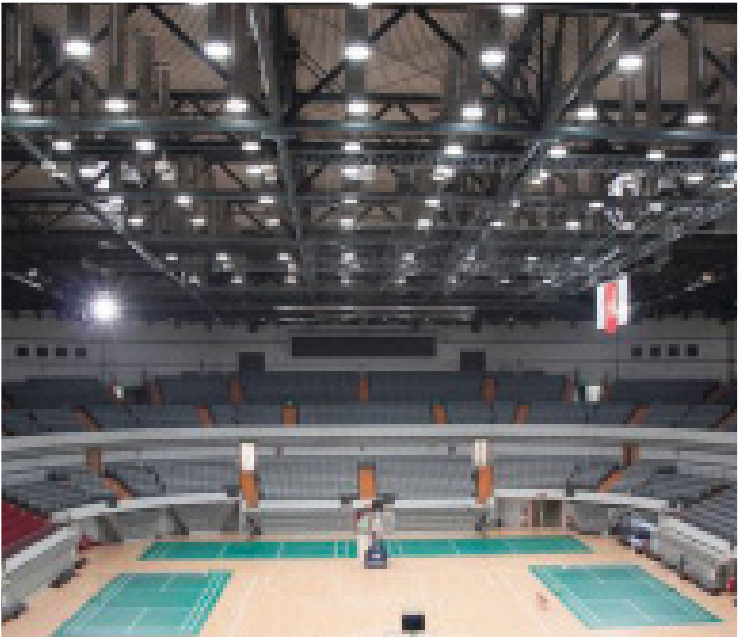
## Large Tubes for Large Spaces

The SkyVault Series is a line of modular, high output tubular daylighting devices that deliver massive amounts of daylight to large volume spaces with high, open ceilings. The beauty of SkyVault is that it's not just one size fits all. Varying combinations of domes and collectors capture daylight and large extension tubes transfer it to an optical diffuser. Daylight can be delivered deeper into the building with the use of an optional Amplifier. The SkyVault Series is a configurable, modular, high-output solution for any large-volume space.



SkyVault Series

Go to [solatube.com/commercial/showcase](https://solatube.com/commercial/showcase) to see additional images



# How to Order the SkyVault Series

Go to [solatube.com/commercial/SkyVault](https://solatube.com/commercial/SkyVault) for more options and details

## STEP 1: START WITH THE CORE

### Powerful Lighting for Large Spaces

Our largest tubular daylighting device has the M74 DS at its core with 29" diameter tubes that extend up to 100 feet to fill the largest spaces with natural light.

*Tube diameter ≈29 in. (736 mm)  
Potential tube length ≈100 ft. (30 m)*



M74 Daylighting System

## STEP 2: CHOOSE TOP ASSEMBLY

### Top Assemblies: Massive Daylight Capture

It all starts with standard domes that are available in both single- and dual-glazed configurations with optional security guards. The light capture really increases with the SkyVault Collector that redirects low-angle light downward while filtering out the heat from infrared wavelengths. All top assemblies are supplied pre-assembled on a curb-mounted cap.



Single-Glazed Dome Assembly  
*(Dual-Glazed Configuration Available)*



Single-Glazed Dome Assembly with Optional Security Guard  
*(Dual-Glazed Configuration Available)*



SkyVault Collector can be added to Single or Dual-Glazed Base Unit

## STEP 3: CHOOSE DELIVERY

### Bottom Assemblies: Deep Delivery

The M74 DS uses unique bottom assembly components to deliver maximum daylight in high-bay applications with the prismatic diffuser and the optional Amplifier, which focuses daylight all the way down to the task area.



Standard Prismatic Diffuser



Optional Amplifier with Prismatic Diffuser

## STEP 4: OPTIONAL ACCESSORIES

### All the Accessories for Big Impact

The SkyVault Series offers a Thermal Insulation Panel to minimize the thermal impact to the building, as well as a 0-10v Daylight Dimmer to control the levels of daylight in the space.



Thermal Insulation Panel



Daylight Dimmer

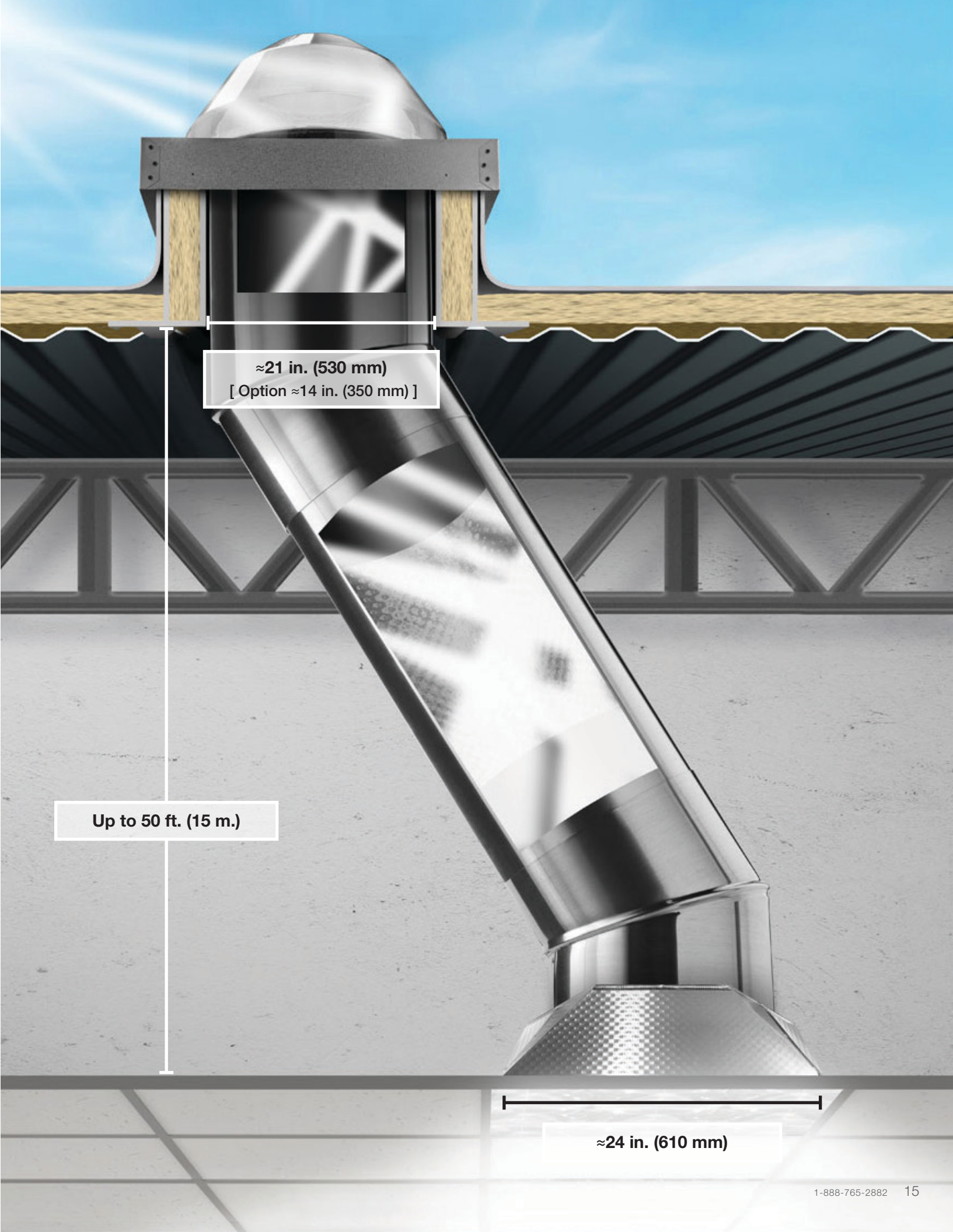
# SolaMaster Series

Classrooms • Office Space • Retail • Medical • Hospitality • Municipal



## Medium Spaces, Maximum Versatility

The Solamaster Series is our flagship product for common commercial applications with ceiling heights from 8 ft. to 30 ft. This product has been used to daylight thousands of applications worldwide ranging from schools to offices to grocery stores. SolaMaster products provide the versatility for numerous applications and sky conditions. Choose from three different models, varying extension tubing configurations (including angle adaptors), and open or closed ceiling options.



SolaMaster Series

Go to [solatube.com/commercial/showcase](https://solatube.com/commercial/showcase) to see additional images



# How to Order the SolaMaster Series

Go to [solatube.com/commercial/SolaMaster](https://solatube.com/commercial/SolaMaster) for more options and details

## STEP 1: CHOOSE YOUR DOME



### 750 DS Dome

The 750 DS is designed to deliver consistent light output throughout the day. It effectively captures low-angle rays in the morning and late afternoon, but rejects midday summer rays to prevent glare, overlighting and overheating.

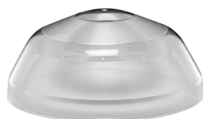
Tube diameter ≈21 in. (530 mm)  
Potential tube length ≈50 ft. (15 m)



### 330 DS Dome

The 330 DS is designed to maximize light output at any time of day. It effectively captures low-angle rays in the morning and late afternoon, and maximizes midday sunlight for powerful performance.

Tube diameter ≈21 in. (530 mm)  
Potential tube length ≈50 ft. (15 m)



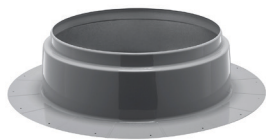
### 300 DS Dome

The 300 DS is an optimal solution for applications where roof or ceiling framing only allows a 14 inch diameter tube or for lower ceiling heights. Available only in closed ceiling applications.

Tube diameter ≈14 in. (350 mm)  
Potential tube length ≈30 ft. (9 m)

## STEP 2: CHOOSE CURBS & FLASHINGS (MOUNTING FOR ANY ROOF)

Standard insulation curbs available.



Self Mounted Flashing



Curb Mounted Cap

## STEP 3: CHOOSE A CEILING OPTION FOR YOUR APPLICATION



Open Ceiling / Round



Closed Ceiling / Round



Closed Ceiling / Square

## STEP 4: CHOOSE A DIFFUSER OPTION TO MATCH YOUR DESIGN VISION

Diffuser options enhance the look of your interior while delivering highly diffuse, evenly-spread natural light. OptiView® DaylightShaping™ Diffusers achieve differing light distribution for specific visual effects. Prismatic diffusers replicate the look of traditional troffers and blend into virtually any design. 300 DS model only available with square diffusers.

### Prismatic Diffusers



Square (closed ceiling)



Round (open ceiling)



Round (closed ceiling)

### OptiView® DaylightShaping™ Diffusers



Square (closed ceiling)



Round (open ceiling)



Round (closed ceiling)

### OptiView® DaylightShaping™ Diffuser Light Distribution Options

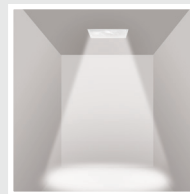
Choose a light distribution spread for your OptiView Diffuser.



OptiView® Superwide



OptiView® Wide



OptiView® Narrow

## STEP 5: OPTIONAL ACCESSORIES FOR TOTAL DAYLIGHTING CONTROL

The SolaMaster Series offers a thermal insulation panel to minimize the thermal impact to the building, as well as a 0-10v Daylight Dimmer™ to control the levels of daylight in the space. And with our integrated LED featuring up to 10,000 lumens, you can keep your ceiling uncluttered while achieving your desired level of illumination, day or night.



Thermal Insulation Panel



Daylight Dimmer™



Integrated LED Light Kit  
(Available in 3,250 lumens for 300 DS and 10,000 lumens for the 330 DS / 750 DS)

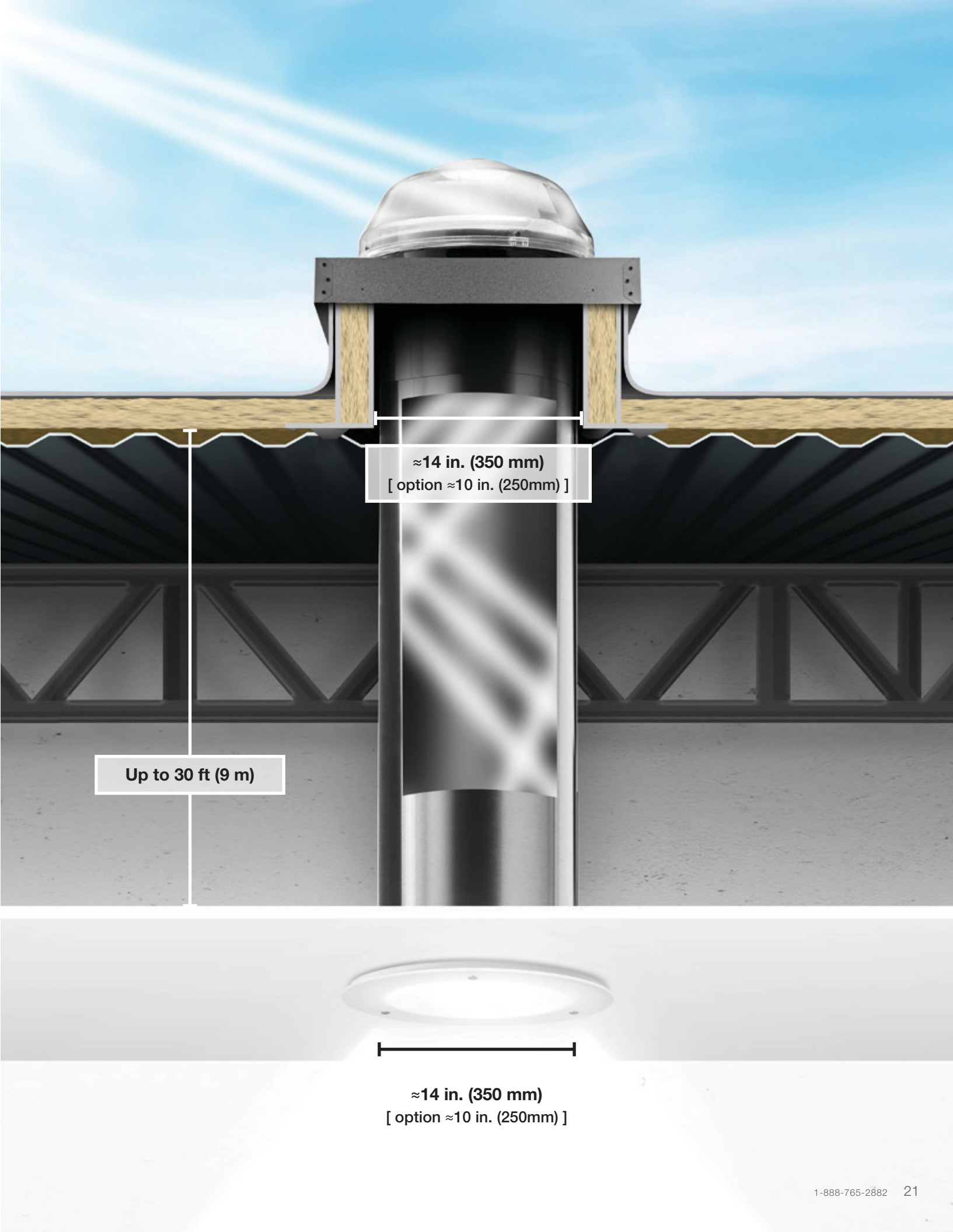
# Brighten Up Series

Corridors • Kitchens • Restrooms • Nooks • Storage • Residential



## Big Impact for Small Spaces

Residential and smaller commercial spaces with corridors, restrooms and alcoves often suffer from lack of natural light. Solatube's Brighten Up Series is the perfect solution for bringing daylight to unexpected, hard-to-reach areas.



Brighten Up Series

Go to [solatube.com/commercial/showcase](https://solatube.com/commercial/showcase) to see additional images



# How to Order the Brighten Up Series

Go to [solatube.com/commercial/Brighten-Up](https://solatube.com/commercial/Brighten-Up) for more options and details

## STEP 1: CHOOSE YOUR SYSTEM

The Brighten Up Series offers two different tubular daylighting devices, 160 DS and 290 DS, both of which are great solutions for small areas with ceiling heights under 10 ft. or where structural issues or aesthetic goals may limit the use of larger diameter tubes. Each can be utilized with hard, suspended or open ceilings.



### 290 Daylighting System

The Solatube 290 DS is ideal for filling small spaces with natural light like bathrooms, corridors, and heights under 10 ft or where structural issues or aesthetic goals may limit the use of larger diameter tubes.

Tube diameter ≈14 in. (350 mm)  
Potential tube length ≈30 ft. (9 m)

### 160 Daylighting System

The Solatube 160 DS is ideal for illuminating smaller spaces like alcoves and hallways with soft, comfortable natural light. It's a great solution for ceiling heights under 10 ft or where structural issues or aesthetic goals may limit the use of larger diameter tubes.

Tube diameter ≈10 in. (250 mm)  
Potential tube length ≈20 ft. (6 m)

## STEP 2: CHOOSE A MOUNT TO FIT YOUR ROOF

The Brighten Up Series has leak-proof flashings to mount its domes on any roof type as well as curb caps and self-flashings for both pitched and non-pitched roofs.



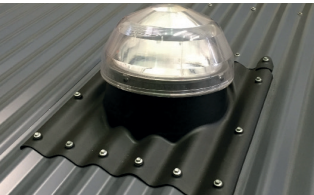
Curb Cap (290 DS only)



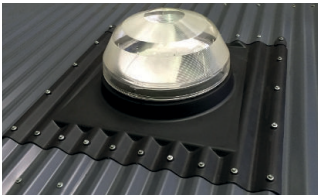
Pitched



Flat



250 Corrugated



400 Corrugated



250 Concrete Tile



400 Tile for Concrete and Terracotta



250 Terracotta Tile



No pitch for over flashing

## STEP 3: CHOOSE A DIFFUSER FOR BEAUTIFUL LIGHT DELIVERY

The Brighten Up Series offers a variety of diffuser options, which can be used with hard, suspended or open ceilings for different aesthetics.



OptiView® DaylightShaping™ Diffusers



Classic Vusion



TierDrop



JustFrost



AuroraGlo (290 DS only)

## STEP 4: CHOOSE OPTIONAL ADD-ONS AND ACCESSORIES

From daylight dimming to integrated electric lights, there's options for you to completely control your daylighting environment.



Integrated LED Light Kit  
(Available in 3250 Lumens for 290 DS only)



Daylight Dimmer™

# Service as exceptional as our products.

When it comes to building design and construction, you've already got your hands full.  
You don't have time to become a daylighting expert too.

Our established network of Solatube Certified Commercial Distributors are trained to help you with every aspect of your building project. These factory-trained daylighting and installation experts make the process of selecting and specifying Solatube products quicker and easier, so you can spend your valuable time on other important project deliverables.

They provide full-service support...from the early stages of defining your project scope through the final stages of building sign-off...and are in every market nationwide. So, no matter where you are, you can find a Solatube Certified Commercial Distributor with the knowledge and experience to help make your project a success.

Go to [solatube.com.au/technical-resources](https://solatube.com.au/technical-resources) for more options and details



## Design Services

Obtain turnkey product recommendations early on to optimize the daylighting opportunity in terms of site location, building size and orientation. Get hands-on assistance with Solatube product selection, system design and detailed daylighting calculations, so you can develop better lighting designs and free up more time for other tasks. Acquire detailed product and installation information relating to your specific project, so you can confidently present your proposal to clients.



## Spec Writing

Ensure specifications are written properly and save time with spec writing assistance from knowledgeable experts. Solatube's proprietary specifications are also available through NATSPEC.



## Lighting Calculations

Let us assist you with lighting calculations using our proprietary Daylight Calculator to ensure optimal product selection. We'll save you time by determining the ideal model and configuration for your project. Request IES and BSDF files for seamless coordination of your daylighting selections with other lighting components.



## Certified Installation

Utilize professional installation services for quick, easy and cost-effective placement of all Solatube products. For online assistance, access the Technical Resources page for self-serve resources such as BIM models, product cut sheets, CAD drawings, and more.



## Green Star rating tools and credit points

Green Star is Australia's trusted sustainability rating tool for the built environment, setting the standard for better, healthier and more responsible buildings and places. Developed by the Green Building Council of Australia, Green Star has been used to certify thousands of buildings, homes and precincts around the country, driving better buildings for today and tomorrow.



## Continuing Education

Earn free AIA credit while learning about tubular daylighting devices via in-person or virtual presentations.



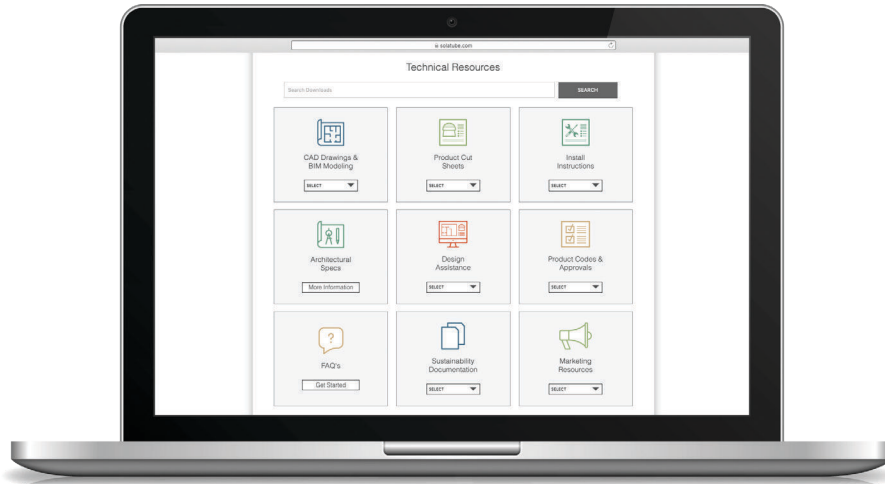
## Compliance Documentation

Obtain necessary compliance documentation with existing project specifications to support your Solatube product selection.

# Technical Resources

Solatube provides all the technical resources needed to select, configure, install and promote the optimal Solatube product solution. This includes architectural specs, CAD drawings, cut sheets, sustainability information and more. Just search by technical categories or product categories to quickly find the resources you're looking for.

Go to **[solatube.com.au/technical-resources](https://solatube.com.au/technical-resources)** for more details



For additional technical information and/or daylighting systems design consultations, contact Solatube International for your specific needs. Care has been taken to ensure that the contents of this publication are accurate, but Solatube International/Kingspan Limited and its subsidiary companies do not accept responsibility for errors or for information that is found to be misleading. Suggestions for, or description of, the end use or application of products or methods of working are for information only and Kingspan Limited and its subsidiaries accept no liability in respect thereof.

Digital Version



Contact us for more information:

[solatube.com.au/skylights/commercial/price-estimate](https://solatube.com.au/skylights/commercial/price-estimate)



Solatube Australia Pty Ltd | 1/12 Sterling Road | Minchinbury 2770 | Australia

954250 v1.3 ©2024 Solatube International, Inc.