

Product: Solatube Bushfire Accessory Kit – Solamaster Series

The NCC states (Volume 2 – P3.10.5) that the performance requirement (P2.7.5) is satisfied for buildings constructed in a designated bushfire prone area in accordance with AS 3959.

The **Solatube Bushfire Protection Accessory Kit** has been designed using non-combustible materials and thereby complies with bushfire attack levels up to **BAL-29** as outlined in AS 3959.

Solatube TDD Bushfire Protection Accessory Kit

Product Specification & Parts



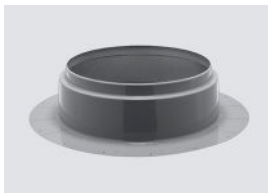
A-330/750DS/
BFK

Use with: Solamaster
330DS & 750DS

Bushfire Flashing Types



Curb-mounted Flashing



Self-mounted Flashing

CHECKLIST ONLY

✓ **Skylight Requirements for
BAL-Low to BAL-29 for AS 3959***

☞ Solatube Australia Comments

✓ Roof penetration shall be adequately sealed at the roof to prevent gaps greater than 3mm.

☞ All gaps greater than 3mm must be sealed to pass inspections.

✓ Glazed elements in roof lights and skylights may be of polymer, provided a Grade A safety glass diffuser, complying with AS1288, is installed under the glazing. Where glazing is an insulating glazing unit (IGU), Grade A toughened safety glass, minimum 4mm, shall be used in the outer pane of the IGU.

☞ The Solatube TDD bushfire protection accessory kit is a minimum 6mm laminated Grade A safety glass.

✓ **BAL-29 Specific Requirements
for AS 3959**

✓ Where roof lights are installed in roofs having a pitch of less than 18 degrees to the horizontal, the glazing shall be protected with ember guards made from a mesh or perforated sheet with a maximum aperture of 2mm, made of corrosion resistant steel, bronze or aluminium.

☞ **>18 degrees roof pitch** – use standard bushfire protection add-on kit in conjunction with metal roof flashing.

<18 degree roof pitch – additional ember guard must be provided (supplied by others) in conjunction with standard bushfire add-on protection kit with metal roof flashing.

* Note these tips are not relevant for BAL-40 / BAL-FZ

☎ **Please contact Solatube Australia
on 1800 131 619 when you require more
information about installing skylights
into bushfire prone areas**