



Project
Ruffey Lake Park
Boulevard Public Toilets,
Doncaster

Building Type
Public Amenities

**Ruffey Lake Park
Boulevard, Doncaster, VIC**

Project Overview

The Ruffey Lake Park Boulevard Public Toilets is a refurbished facility with universal accessible toilet cubicles catering to all genders and abilities.

A changing place facility will be added in 2023 incorporating Solatube's

Objective

A universally accessible public amenity facility with sustainable ongoing operational costs.

Product Used

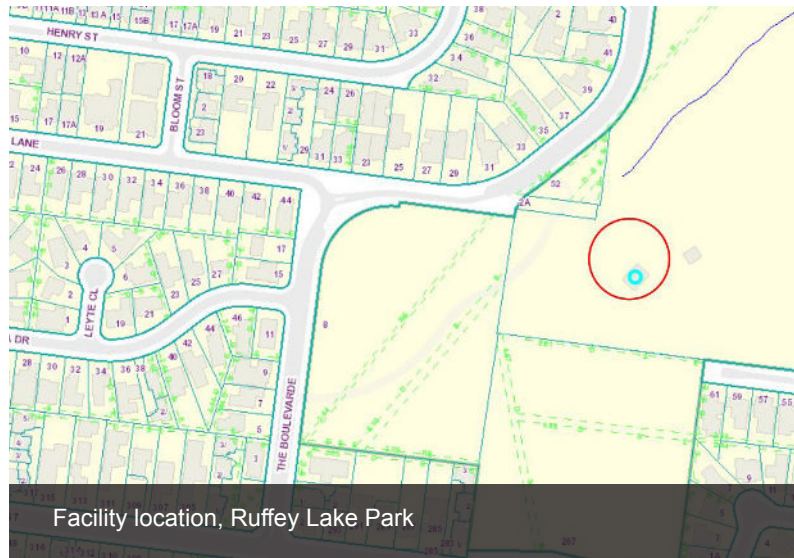
Solatube 160DS

Solution

- The facility is set amongst mature shade trees. The use of Solatube tubular skylights allows maximum daylight to filter into the cubicles' interior, therefore minimising the need for artificial lighting.
- The impact resistant acrylic dome and moulded flashing, that matches the roofing profile, also offers reassurance in terms of long term weather protection.



Set amongst mature shaded trees, the Solatube tubular skylights allow maximum daylight to filter into the interior.



Facility location, Ruffey Lake Park



Solatube 160DS