



Change Your Light.



Change Your Life.



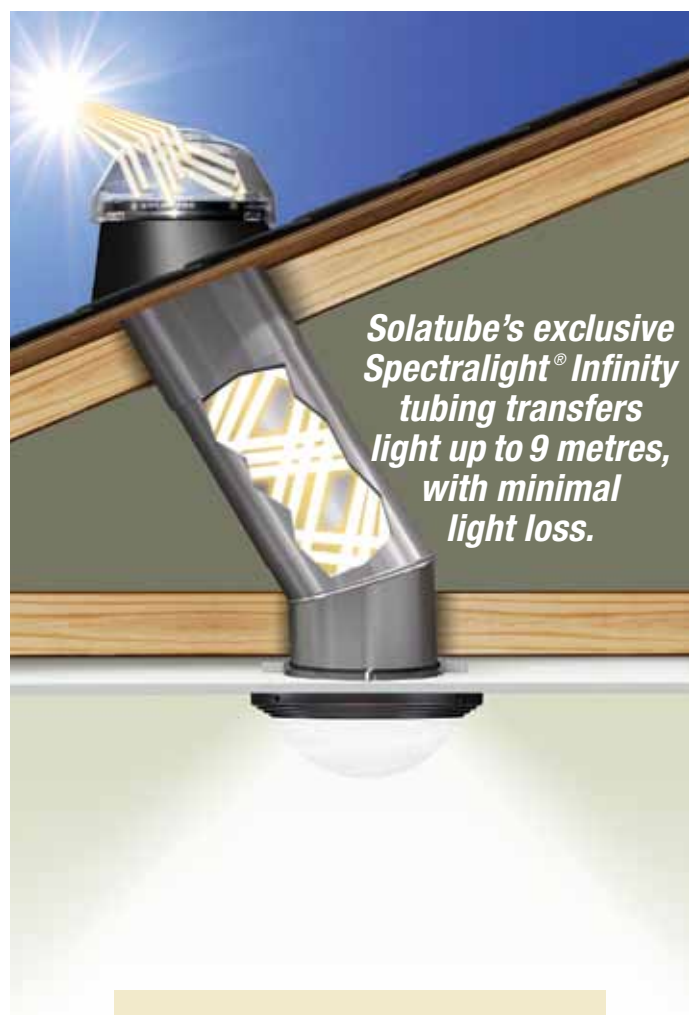
Turn Any Room Into a Sunroom

Your home is a unique reflection of you and your style. But without proper lighting, your home may feel closed in and dark, making it difficult to read, cook, and even differentiate between colours.

With Solatube Daylighting Systems you can turn any dark room into a sunroom—even those on the ground floor or in the basement.

And because installing a Solatube Daylighting System can usually be done in about two hours, you can change your light and begin enjoying a better quality of life all in the same day.

So what are you waiting for?



Solatube's exclusive Spectralight® Infinity tubing transfers light up to 9 metres, with minimal light loss.

“We're changing the way people think about natural lighting.”



*—David Rillie
CEO, Solatube
International, Inc.*



Discover the Benefits of

Daylight

Our busy schedules often prevent us from experiencing the things in life that are good for us, like spending time outside and soaking up the sunshine. But did you know that getting more sun could actually change your life for the better?

The benefits of daylight are indisputable:

Studies have shown that it can make you more productive by boosting your energy level; it can strengthen your mental abilities by improving your concentration and it can enhance your well-being by lifting your mood.



Solatube Daylight



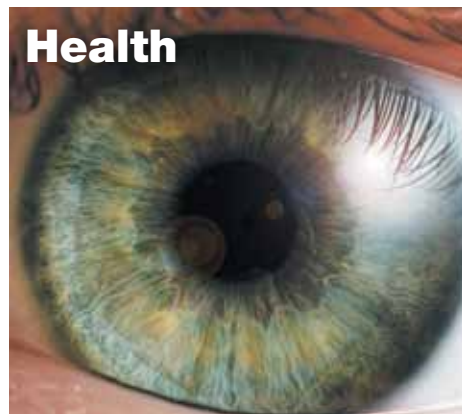
Fluorescent Light



Incandescent Light

In your home, the positive effects of daylight offer additional benefits. Interior spaces seem larger. Colours appear truer and brighter. Your environment feels more inviting.

By utilising daylight to brighten your interior spaces, you'll also reduce your need for electricity, minimise the impact on the environment and lower your power bills. With a Solatube Daylighting System in your home, you'll receive all the benefits daylight has to offer even if you don't have time to go outside and enjoy the sunshine.



Health

Daylight entering through the eye triggers hormone production that promotes healthy sleep/wake cycles, so we wake feeling well rested.



Happiness

Sunlight causes our brains to produce serotonin, a hormone that can improve mood by alleviating pain, providing energy and making us feel happy.



Well-being

People who get regular exposure to sunlight tend to be more optimistic, sleep better at night and have a better sense of well-being.



The Ingredient for a Brighter

Kitchen

The kitchen is the heart of the home. It's where meals are cooked, studying is done and families and friends gather. Natural lighting can enhance your experience by bringing out the colour of food and making the meals you serve more appealing; it can improve concentration so homework gets finished quicker; it can even boost energy levels for more lively conversations. In addition, natural light can improve the look of your kitchen by bringing out the rich textures of your cabinets and counters. A Solatube Daylighting System is the ingredient to make your kitchen a brighter place.

Benefits

- Detailed tasks such as cutting vegetables become easier and safer with natural light.
- Natural light lets colours burst forth, making salads look greener and more appealing.
- Daylight reduces eye strain, making it easier to read the small print in recipes.
- A Solatube Daylighting System enables light to be placed exactly where you need it to optimise activities like cooking, reading and socialising.



“Use a Solatube Daylighting System to strategically place light for dramatic effect – such as over a kitchen island – or to increase visual acuity for room-specific tasks like cutting vegetables.”



—Andrew, Solatube Certified Installer

“It lit up my kitchen as if it had a wall of windows, even though it's an interior kitchen.”

—Ellen W.



Shower Yourself with Sunshine

Bathroom

The bathroom is the place you get yourself ready for the world. You shower; you shave; you apply makeup. Artificial lighting can make it difficult to see well, causing you to strain your eyes trying to discern between the shampoo and conditioner bottles, miss a spot while shaving, or select eye shadow that is too bright for your skin tone. A Solatube Daylighting System can help you avoid these issues by brightening your bathroom with pure, clean daylight. So go ahead and shower yourself with sunshine.

Benefits

- No more messing with the lights every time you enter and leave the bathroom.
- With natural light, reading the small print on medication labels is easier and causes less strain on your eyes.
- Makeup applied in artificial light can end up looking very different when viewed in natural light. Daylighting in your home lets you see how you really look before you venture out in public.
- Shaving in natural light can help you see better, so you can avoid nicks and missed spots.
- Electric lights can give off a yellowish glow, making even a clean bathroom feel grungy. A Solatube Daylighting System gives your bathroom a cleaner, airier feel.



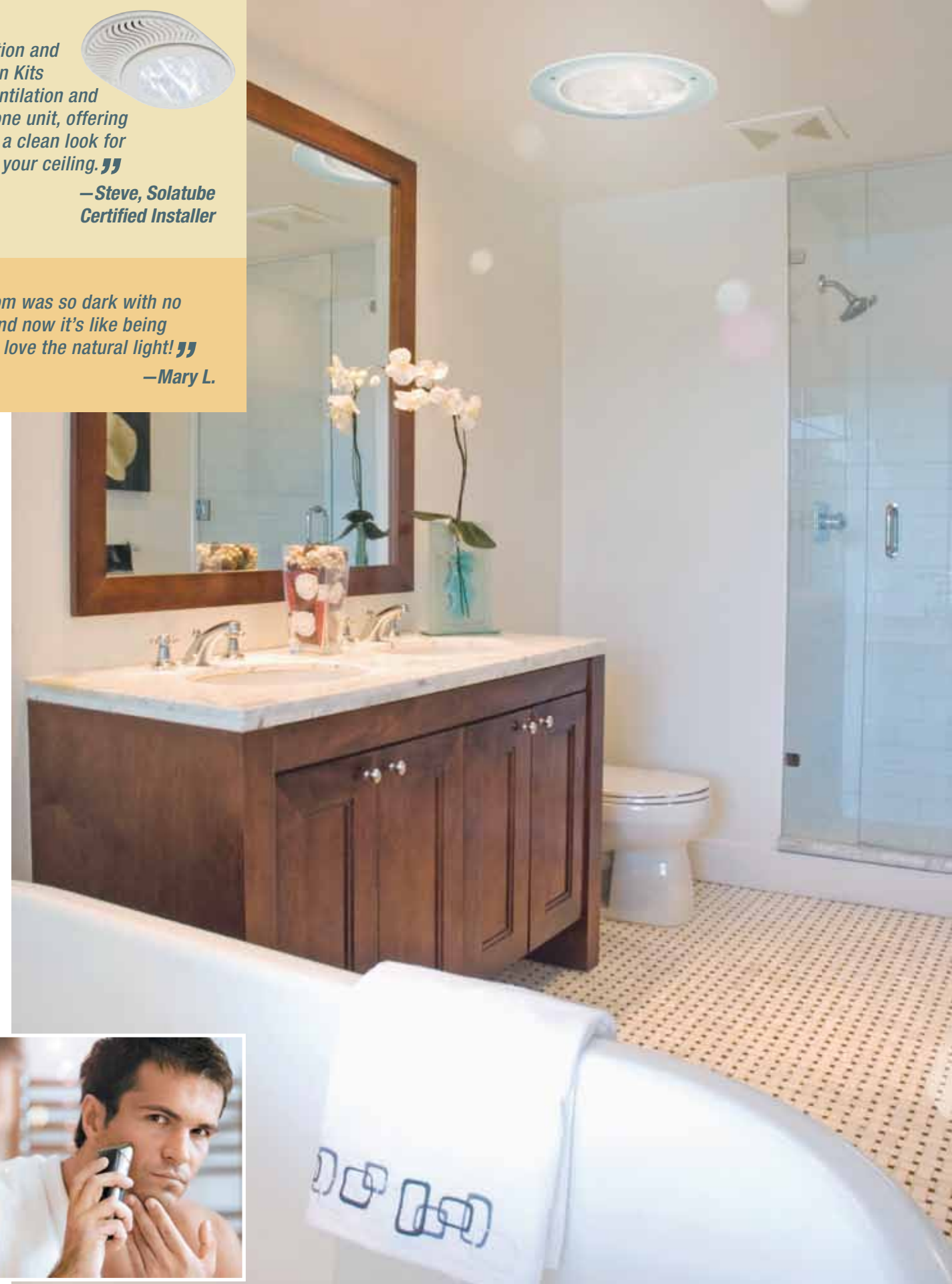
“The Ventilation and Light Add-on Kits combine ventilation and lighting in one unit, offering a clean look for your ceiling.”



—Steve, Solatube Certified Installer

“Our bathroom was so dark with no windows, and now it's like being outside. We love the natural light!”

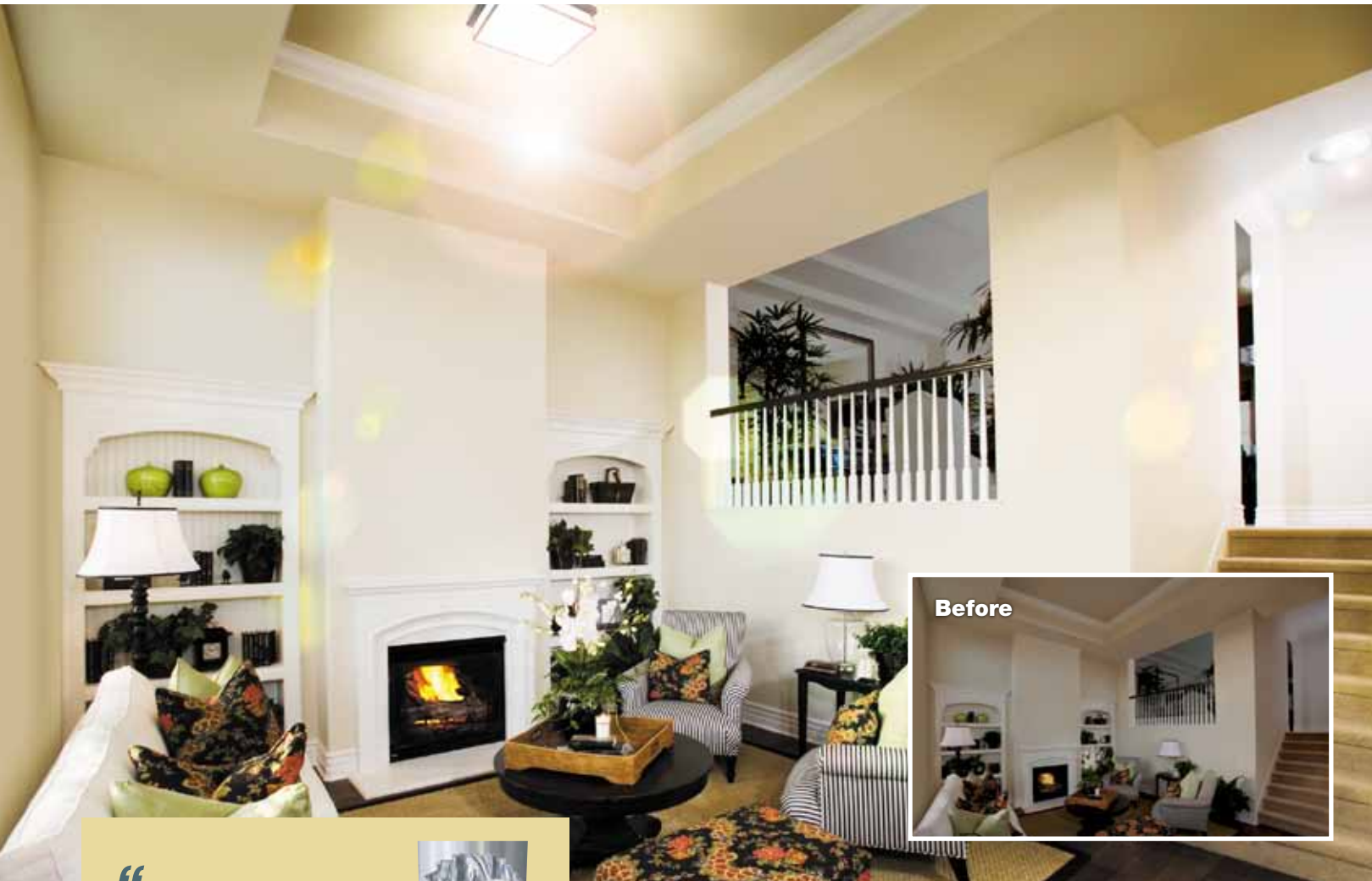
—Mary L.



Bring New Life to Your

Living Room

Whether you have a living room, family room or media room, this space is often the activity hub of a home. It's where people gather to socialise with friends, watch a favourite TV show, or curl up on the couch with a good book. A Solatube Daylighting System can enhance this active space by using natural daylight to brighten dark spots and bring new life to your room.



“The optional Daylight Dimmer allows you to adjust the amount of light entering the room, and is the essential accessory for a room with a media center.”



—Mike, Solatube Certified Installer



Benefits

- Daylight in your home can reduce eye strain and make reading easier.
- Whether you're entertaining, working or watching TV; natural light can make any activity more enjoyable.
- If your living room is bordered by windows, a Solatube Daylighting System can help balance the interior and exterior light to reduce glare.

Feast on Daylight in the

Dining Room

It's no secret that food brings people together and the dining room is often the setting for family dinners, holiday feasts, and cozy get togethers. When you add natural light to the mix, you'll make meals more mouth-watering and bring out the shine in your fine furniture and decor. Add natural light with a Solatube Daylighting System and make these special occasions even more memorable.



“Entertaining in your dining room? I highly recommend installing the AuroraGlo Decorative Fixture. It brings elegance and warmth to one of your most popular spaces.”



—Justin, Solatube Certified Installer



Benefits

- Natural light brings out the colour of vegetables and fruits and makes meals more appetising.
- Decorate with sunlight and bring out the rich decor of your dining room.
- Enhance your dining environment with natural light and make your gatherings more memorable.

Transform Small Spaces into Showcases

Hallway, Entry, Stairs or Closet

Hallways, stairwells, entryways and closets are often overlooked when it comes to lighting. Although they are heavily traffic areas, they remain missed opportunities for ensuring safety, showcasing colours and illuminating the architecture of your home. Solatube Daylighting Systems allow you to bring daylight indoors so you can diminish the dark and transform even the smallest space into a showcase of light.



Benefits

- Make your home more inviting with entryways, hallways and stairwells that are brightly lit by daylight.
- Hallways often possess under-utilised wall space. With natural light present, this space can become a showcase for family photos and artwork.
- Adding natural light to a dark stairwell can open up the space and help prevent stumbles.
- Daylight aids in colour rendition, so you'll see colours in their true state and notice the difference between black and navy blue.
- Transform an entryway into a showpiece, providing guests with an inviting entry point to your home that makes them feel comfortable and welcome.



“Windowless hallways and stairs are high traffic areas where artificial lighting is often the only option. Using natural light ensures safe passage and reduces the need for electricity.”



—Andrew, Solatube
Certified Installer

“What a difference! My dark hallway now has light and my walk-in closet has natural lighting so I can see the actual colours.”

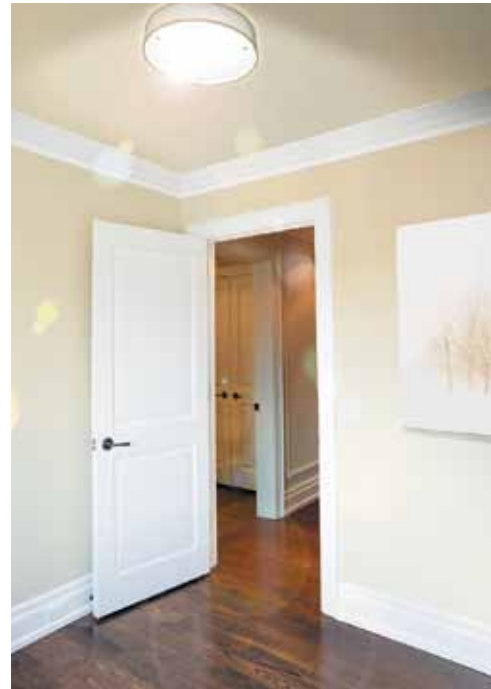
—Margaret B.



Not Just for Sleeping Anymore

Bedroom

There's nothing like pure sunlight streaming into your bedroom to welcome you to a new day. It wakens your senses, puts you in a good mood and prepares you to take on the world. That same natural light can provide you with pure colour rendition so you can select the perfect outfit. Its pure, clear rays also allows you to read a book or work on the computer without straining your eyes. When you harness the power of the sun with a Solatube Daylighting System, your bedroom can become a place to spend not only your sleeping hours; but your waking ones as well.



Play All Day in Your

Game Room

Grownups and kids alike can benefit from playtime, whether that means a billiard battle with your best bud in your games room, or a dance party with your kids in their play room. Natural lighting can amplify the positive effects of playing by reducing eye strain and enhancing mood. In addition, Solatube Daylighting Systems block the harmful UV rays that can damage skin.

So let the light in and play all day.

Benefits

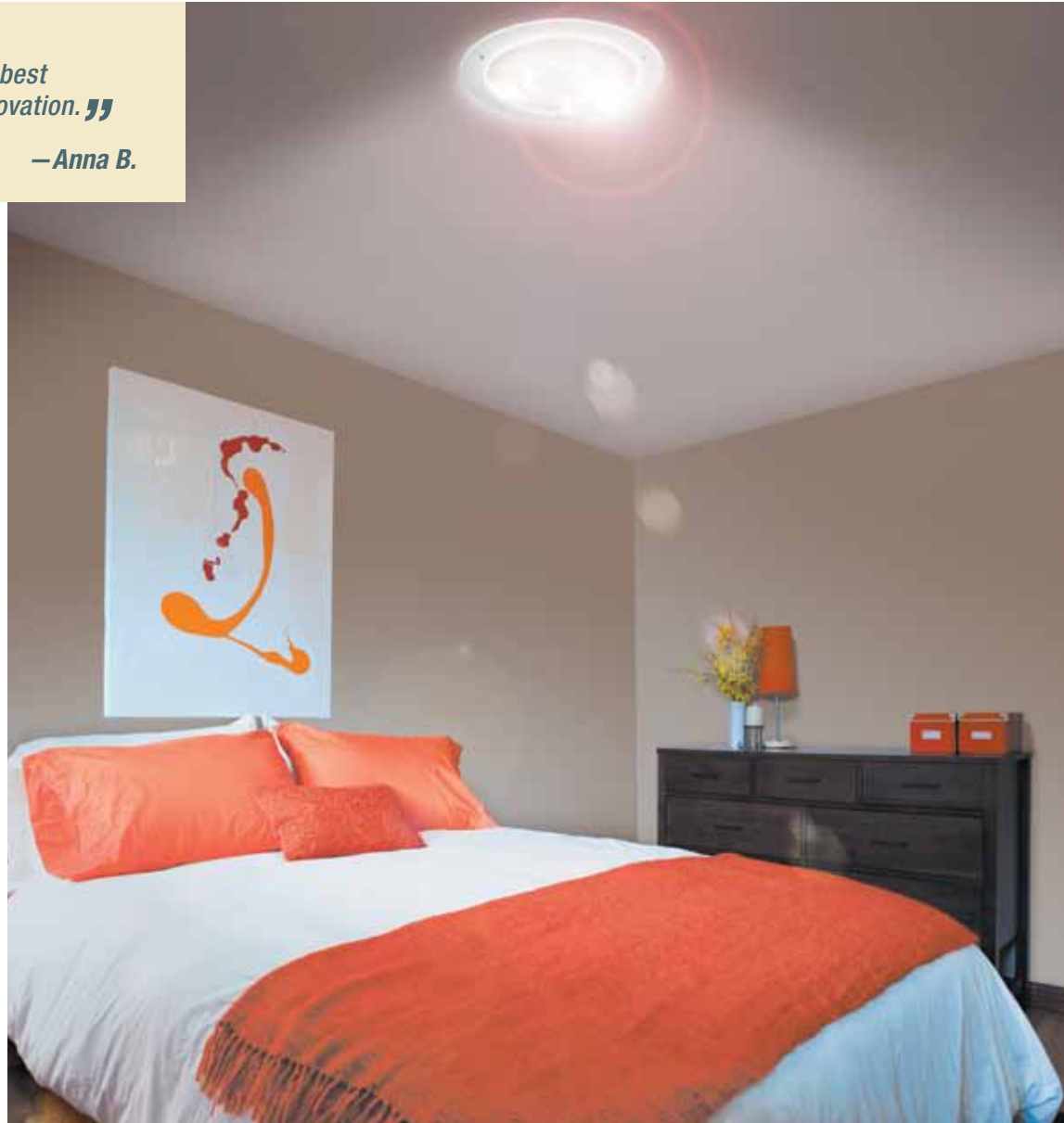
- Whether you're playing pool or poker, natural light enhances your mood and energy level so you can play all day.
- Natural light can reduce eye strain to make playtime more enjoyable.

“ We rate this as one of our best decisions in our home renovation. ”

—Anna B.

Benefits

- Getting ready for the day is easier in natural light. Pure daylight renders colours in their true state, making it easy to find socks that match your pants.
- Natural light in the bedroom allows you to tune into your natural waking and sleeping patterns, so you can wake up more rested.
- Today's bedroom is used for sleeping, reading, dressing, watching TV, reading and even working on the computer. A Solatube Daylighting System provides just the right amount of light to meet all your needs.



“ Traditional skylights and older windows can transfer heat from the outside into your home. A Solatube Daylighting System provides a comfortable light level while preventing heat buildup in your games or play room. ”

—Barney, Solatube Certified Installer



Sunlight Lets You Work Smarter, Not Harder

Home Office

Studies have shown that people who work in sunlight experience less eye strain, take fewer sick days and are more productive. In addition, using daylight in your home office or study can benefit your budget by reducing daytime electricity expenses. So why work harder than you need to? Install a Solatube Daylighting System and start working smarter.

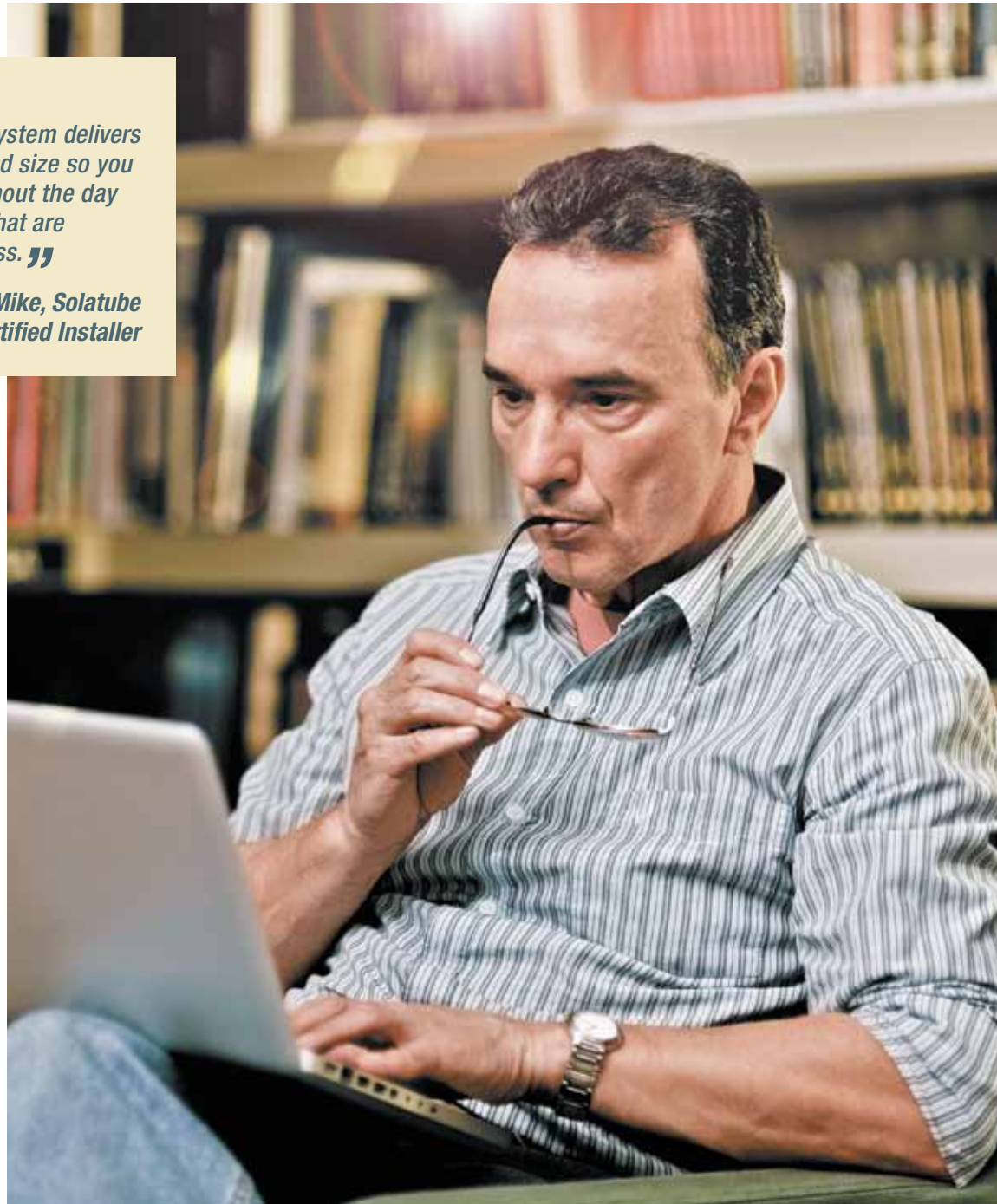
“ A Solatube Daylighting System delivers correct light placement and size so you can stay focused throughout the day and complete the tasks that are important for your business. **”**



—Mike, Solatube Certified Installer

Benefits

- Dim, artificial light can make visual tasks such as studying, filing and using a computer hard on your eyes. Bright, clear daylight can ease the strain and make tasks easier to complete.
- Compared to other rooms, a home office requires specific task lighting. Daylighting allows for precise light placement that helps with tasks such as reading and writing.
- Furniture in a home office can absorb artificial light, making the room feel dark and closed in. Daylighting counteracts this effect by brightening the space and making it seem larger.



Make the Most of Your “Me Time”

Hobby Room

Your “me time” is precious, so make the most out of it. Whether you’re into sewing, painting, scrapbooking, constructing models, or playing a musical instrument; filling your hobby or activity room with sunlight can enhance your enjoyment. In poor lighting, detail tasks like reading the small print on instructions, threading a needle, or assembling miniature model parts can make you squint and give you a headache. Clear, bright daylight eases the strain on your eyes and also provides perfect colour rendition, so you’ll be able to discern even the smallest colour differences in your paintings or admire your Don Bradman memorabilia in all its glory.

Benefits

- Sunlight improves visual acuity, which can assist with hand/eye coordination required for precision activities like sewing and model building.
- If your hobby room has small or no windows, a Solatube Daylighting System will add bright daylight so you strain your eyes less and can enjoy your activity longer.



Load Your Laundry Room with Light

Laundry

Doing the laundry covers everything from sorting and washing to folding and ironing. The laundry room is often small and poorly lit, making it difficult to sort colours and mend clothes. Loading in pure, natural daylight can transform your laundry room into an environment that is as clean and bright as the outdoors.

Benefits

- Daylight provides perfect colour rendition, making it easier to sort clothes so you can keep your whites white and your colours bright.
- Electric lights emit a yellow hue, making rooms look dingy. The sun delivers bright, clear daylight, so your laundry room will look crisp and clean.



“A Ventilation Add-on Kit can help control the humidity that is common in laundry rooms.”



—Justin, Solatube Certified Installer



Light Your Garage For Safety

Garage

Garages present unique lighting challenges because of their large, open spaces. Artificial lighting is spotty at best and produces dark areas that create hazardous conditions when using power tools, working on vehicles, or shelving items for storage. With Solatube Daylighting Systems, sunlight can be piped in to evenly illuminate the full expanse of a garage. The result is a safe and well-lit environment for any task.



“A safe environment is essential in a garage. Solatube Daylighting Systems provide bright, uniform lighting to prevent dark spots and ensure a safe work area.”



—Steve, Solatube Certified Installer

Benefits

- Dim lighting can make working with power tools or servicing your vehicle a dangerous task. Natural light brightens work areas to improve safety.
- Tasks like organising your garage can be tedious, especially with inadequate lighting. Daylighting can make it less of a chore by providing well-lit conditions to work in.



Optics

Solatube Daylighting Systems combine breakthrough optical technology with advanced designs and the highest quality materials to fill your living spaces with an abundance of pure, clear natural light.

From sunup to sundown, daylight is harvested by a specially designed rooftop dome that uses our proprietary Raybender® 3000 Technology. The dome collects sunlight from any angle, selectively harnessing only the wavelengths we need to see and filtering out those we don't. It then redirects the sunlight through our highly reflective Spectralight® Infinity Tubing and delivers it to you in spaces never thought possible—like the bathroom, laundry room and kitchen. Solatube Daylighting Systems make these spaces brighter to give you the light you need to see better, accomplish more and live better. Solatube...the brightest idea since the creation of the sun.



Solatube Daylighting Systems come in two sizes for different lighting needs:

Solatube 160 DS

Delivers daylight to spaces up to 18.5 sq. metres. Ideal for small to mid-sized areas like bathrooms, laundry rooms, closets and hallways.

Solatube 290 DS

Delivers daylight to spaces up to 28 sq. metres. Works best for large rooms like kitchens, family rooms and bedrooms.

“Our systems selectively harness the wavelengths of light you need to bring the clearest, purest daylight into your home.”



—Neall Digert, Ph. D., MIES

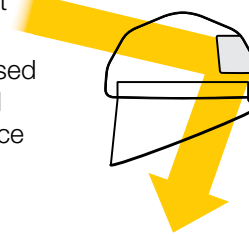
1. Capture

The story all begins with capturing sunlight. We challenged our engineers to develop a dome that automatically adjusts daylight harvesting throughout the day while achieving demanding thermal performance requirements. The solution - The most advanced dome technology with the ability to virtually bend daylight.

LightTracker™ Reflector

An innovative in-dome reflector that:

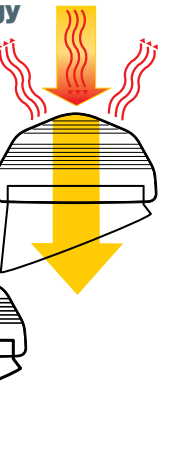
- Redirects low-angle winter sunlight for maximum light capture
- Increases light input for greater light output
- Delivers un-surpassed year-round performance



Raybender®3000 Technology

A patented daylight-capturing dome lens that:

- Redirects low-angle sunlight for maximum light capture
- Rejects overpowering summer midday sunlight
- Provides consistent daylighting throughout the day



2. Transfer

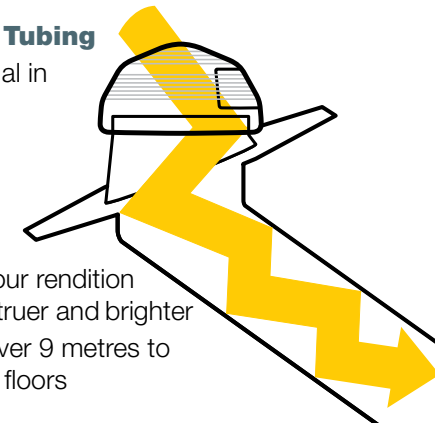
How much does a bounce matter? You'd be surprised. Every time a ray of light is reflected, a small amount of that light is lost. And even a few percentage points in reflectivity make a huge difference in overall performance. It's that attention to detail that led us to develop the highest performing tubing available.

Spectralight® Infinity Tubing

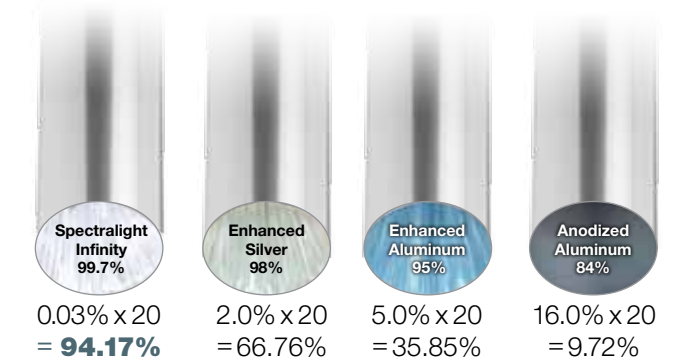
The most reflective material in the world.

Our tubing:

- Delivers 99.7% specular reflectivity for maximum sunlight transfer
- Provides the purest colour rendition possible so colours are truer and brighter
- Allows for run lengths over 9 metres to deliver sunlight to lower floors



Percentage of light delivered after 20 bounces



What Are A Few Percentage Points?

A small difference in reflectivity value can make an exponential difference in overall light delivery of a tubular daylighting device.

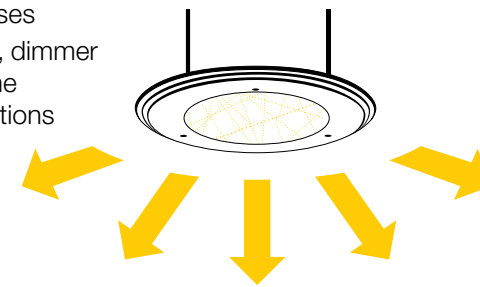
3. Deliver

What makes Solatube Daylighting Systems unique? The ability to offer amazing control over daylighting a space. From light control to diffusion, we've thought of virtually everything you need to bathe a space in pure, natural light.

Stylish Daylight Delivery

Form and function combine for optimal daylight diffusion with:

- New Glass Distractions Decorative Fixtures
- Warming or softening Effect Lenses
- Ventilation, dimmer or nighttime lighting options



Superior Colour Rendition

The unique spectral reflectance characteristics of Spectralight® Infinity Tubing reflect the visible spectrum without colour shift to deliver the purest colour rendition possible.

It's performance like this that ensures that the colour you use in a space will be vivid and accurate.



Go Beyond Functional to Beautiful

Fixtures

“Solatube’s Decorative Fixtures are really a dream come true for anyone who loves daylight and wants to customise the look of their home, just like they would with traditional lighting fixtures.”



—Denise Homme,
Interior Designer

QuadraFrost

Deliver stunning daylight with symmetry and style. QuadraFrost can be arranged to complement or contrast the lines of any room. Available in 290 DS size.



VividShade

The chic VividShade accents daylight with contemporary fabric. Available in 290 DS size.



AuroraGlo

Command attention with the smooth, cascading lines and subtle beauty of AuroraGlo. Available in 290 DS size.



TierDrop

The low-profile TierDrop features a beautiful, cascading design for a classic look. Available in 160 DS and 290 DS sizes.



The contemporary look of the JustFrost Decorative Fixture complements any decor.



The AuroraGlo Decorative Fixture adds elegance and style to any room.

Glass Distractions Decorative Fixtures

Because we at Solatube are homeowners too, we understand that it’s not enough to bring dazzling daylight indoors if the fixture delivering that light isn’t equally impressive. Solatube Decorative Fixtures enhance the look of any interior with styles that range from practical to elegant to dazzling.



OptiView

The unique, dazzling lens of OptiView delivers artful views of the sky in a low-profile design. Available in 160 DS and 290 DS sizes.



JustFrost

Simply stunning, JustFrost showcases sunlight in a clean, contemporary design. Available in 160 DS and 290 DS sizes.



Classic Vusion™ Diffuser

Featuring a classically stunning design, the Vusion Diffuser delivers radiant light that complements any room. Available in 160 DS or 290 DS sizes.

Lighting Just the Way You Want It

Accessories

Each room in your home has a unique purpose and your lighting can affect how well that purpose is realised. A young child's room, for instance, may benefit from a Daylight Dimmer for afternoon nap time while a hallway may require a Light Add-on Kit for nighttime navigation. With our unique line of accessories, you can get the functionality you want from your Solatube Daylighting System to meet the specific needs of your home.



Solatube's attractive 3-in-1 design leaves your ceiling uncluttered (above) unlike other options that can leave your ceiling cluttered with multiple entry points (below).



Ventilation Add-On Kit

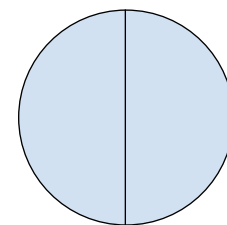
Bathrooms and laundry rooms are prone to high humidity. The Ventilation Add-On Kit provides the dual convenience of ventilation with daylight. Plus, the attractive 2-in-1 design leaves your ceiling looking orderly and uncluttered.

For even more functionality, consider adding a Light Add-on Kit for a dynamic 3-in-1 unit.

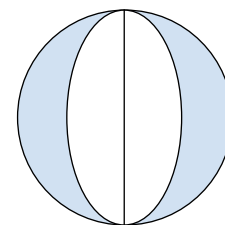
Light Add-On Kit

Your active life doesn't slow down when the sun sets. For nighttime use, the Light Add-on Kit keeps your home bright with the convenience of a switched light so you can keep going long after nightfall.

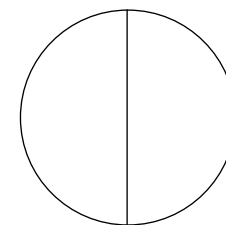
Great for lighting up bedrooms, bathrooms, closets, hallways and more.



Open 100%



Open 50%



Closed

Daylight Dimmer

Control the amount of light entering a room with the convenience of a wall-mounted switch. The Daylight Dimmer features our patented butterfly baffle and is a smart option for matinee movie watching in living rooms and media rooms or video gaming in games rooms.



Consult. Install. Enjoy. All In About 2 Hours.

Installation

When It Comes To Service, We Treat Your Home As If It Were Our Own.

Our Solatube Certified Installers are highly trained professionals with design expertise and installation experience who will work with you to bring out the best in your home through the integration of brilliant natural light. They will assess your space, design a lighting solution specific to your needs and install your new Solatube Daylighting System—all in about two hours! Because there's no need for structural reframing, tunneling, plasterboarding, or painting; there's no mess and the disruption to your day is minimal.



In the end, you'll be able to enjoy the brilliant beauty of natural light in your home that only Solatube can deliver in just a matter of hours.

To schedule your free in-home, no obligation design consultation, find your local Premier Dealer online at www.solatube.com.au or call **13 16 19**.

No Dealer In Your Area? You Can Do It Yourself.

If you live in an area without a Premier Dealer, you, a contractor or local handyman can install a Solatube Daylighting System too. We'll provide you with step-by-step instructions and useful tips to help you convert any room into a brilliant and beautiful space. Plus, our knowledgeable customer service representatives are available to answer your questions.

For more information on how to get your project started, call **13 16 19**.



Change Your Light and Change Your Life Today

Your home is your personal retreat from the busy world. Don't let underlit rooms cloud its beauty and leave you feeling trapped in darkness. When you change your artificial lighting to a Solatube Daylighting System, you will transform your dark rooms into bright and beautiful spaces that are more colourful, spacious and inviting. Plus, you'll use less electricity, minimise the environmental impact and lower your power bills. Daylight in your home can also lead to a healthier lifestyle due to the numerous health benefits it offers, such as:

- **Increased productivity**
- **Enhanced concentration**
- **Heightened energy levels**
- **Healthier sleep/wake cycles**
- **Improved mood**
- **Better sense of well-being**

Let the beauty and style of your home shine through with natural sunlight from a Solatube Daylighting System. It's the fastest and simplest solution to a brighter home and a healthier lifestyle.

To make the change from artificial to natural daylight, contact us today!



HIA member 
the best in the business



green building council australia
MEMBER



BRANZ Appraised
Appraisal No.665 (2009)



SOLATUBE®

13 16 19 | www.solatube.com.au

Part No. 951574 © Copyright 2012 Solatube International, Inc. All rights reserved.

Solatube®, Spectralight® Infinity, OptiView®, Brighten Up®, SolaMaster®, Raybender® 3000, LightTracker™ Reflector, Innovation in Daylighting™, Classic Vusion™, and Solatube Daylight Dimmer™ are all registered marks of Solatube International, Inc.